

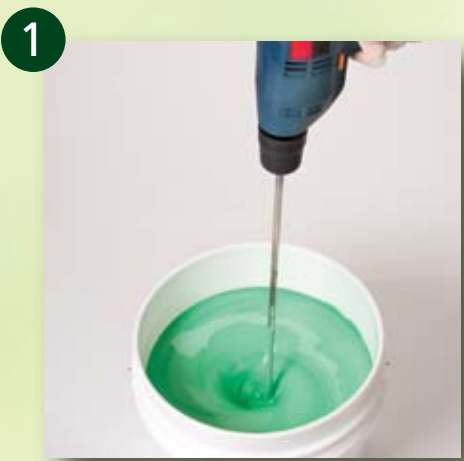
pure. brilliance™

THE FIRST HIGH PERFORMANCE
NONTOXIC CLEAR GLAZE

Which process is best for me?

Duncan Clear Glazes provide a protective finish to your ware. Clear Dipping Glazes save time when glazing a high volume of projects and makes glazing large pieces fast and easy. Clear Brush-On Glazes offer a hands-on personal approach to glazing and offers excellent control of application.

DIPPING GLAZE - STEP-BY-STEP



Mix in Pail

Mix with electric mixer for no more than two minutes until you see a vortex. Avoid touching edges of pail with the mixing blade. Use a stainless steel wire whisk to stir glaze after initial mixing.



Check Viscosity

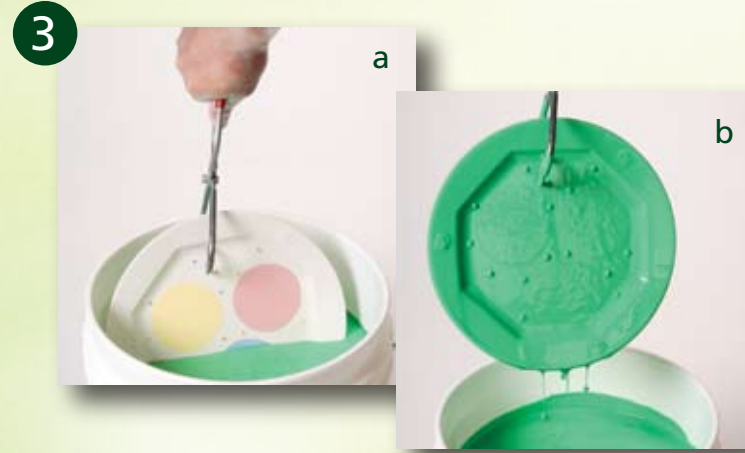
- Submerge a TL497 Viscosity Cup into tank and fill with glaze. As you lift cup from glaze, begin timing.
- Stop timing when the steady stream of glaze begins to break. A range of 19-24 seconds is normal. Add small amounts of water as needed to thin.



Dipping with Hands

- Wearing protective gloves, use a smooth casual motion to submerge cone 04 bisque in glaze, covering approximately 90% of piece. Quickly lift ware out of glaze. Shake off ware to remove excess glaze and achieve uniform application. Let dry.
- Using same motion, dip unglazed portion, slightly overlapping glazed area for full coverage. Let dry.

OR



Dipping with Tongs

- Gently grasp cone 04 bisque with tongs and submerge in glaze covering entire piece.
- Quickly lift ware out of glaze. Shake ware to remove excess glaze and achieve uniform application. Let dry.



Touch Up

After ware is dry, use an SB807 Fan Glaze brush to touch up tong marks or any missed areas with glaze. Use a TL420 Palette Knife to shave off drips or runs to prevent airborne dust.



Fire Glazed Bisque

Let ware dry thoroughly. Set ware securely on clean, sharp stilts in kiln. Fire to shelf cone 06.

BRUSH ON - STEP-BY-STEP

For underglaze that has not been fired, it is recommended to sponge on the first coat and apply a second coat with a Glaze brush. For pre-fired underglaze, apply two coats of glaze with a Glaze brush.



Mix

Mix Pure Brilliance™ Clear Glaze with TL 420 Palette Knife.



Sponge

Dab a sponge into glaze and dab one coat over colors on surface of cone 04 bisque to cover.

Brush

Dip a Glaze brush in glaze and apply two flowing coats. Let dry between coats.



Fire Glazed Bisque

Let ware dry thoroughly. Set ware securely on clean, sharp stilts in kiln. Fire to shelf cone 06.



DIPPING
26398 Pure Brilliance™ Clear Dipping Glaze 4 oz
26399 Pure Brilliance™ Clear Dipping Glaze 3.5 Gallon

BRUSH ON
26394 Pure Brilliance™ Clear Glaze 4 oz
26395 Pure Brilliance™ Clear Glaze 16 oz
26396 Pure Brilliance™ Clear Glaze Gallon
26397 Pure Brilliance™ Clear Glaze 3.5 Gallon



Choose Design



Decorate



Embellish



Seal & Beautify



Printed on paper containing minimum
10% Post-Consumer Recycled Fiber

Duncan